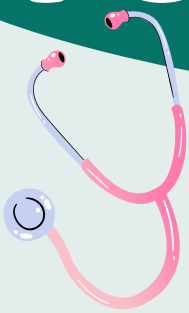


WE ARE HIRING

RURAL CLINICAL EDUCATION FACILITATORS

FUEL YOUR PASSION

& share your wealth of knowledge
with the next gen!



The role of the CEF is to oversee, train,
and evaluate a group of 3-6 nursing
students in a clinical setting for the
Bachelor of Nursing program



We are looking for CEFs in the following
areas:

- Interlake-Eastern
- Prairie Mountain Health
- Southern Health-Santé Sud
- Northern Health Region

From Feb 26 - April 12; 2-3 days per week

Scan the QR code to apply!

Requisition #: 29880



CONTACT US:

 BNClinical@umanitoba.ca